

ComAp: 4G/LTE & GPS Antenna



Order code: OT1A4GGPSCX

Combined antenna for 4G/LTE and GPS (screw mount)

Datasheet

Key Features

- ▶ Cable 1: CELLULAR / LTE
 - 698-960 MHz
 - 1710-2170 MHz
 - 2500-2700 MHz
- ▶ Cable 2: GPS/QZSS/Galileo
 - 1575 MHz
- ▶ Cable length: 4m
- ▶ Screw Mount
- ▶ Connector type: SMA-Male Standard
- ▶ RoHS
- ▶ High Performance
- ▶ Ground Plane Dependent

Technical data

Antenna and electrical specifications

Cable 1			
Parameters	CELLULAR Antenna		
Standards	2G, 3G and 4G		
Band (MHz)	700/850/900	1700/1800/1900/2100	2600
Frequency (MHz)	698-960	1710-2170	2500-2700
Return Loss (dB)	~-11.6	~-13.0	~-15.2
VSWR	~2.1:1	~1.6:1	~1.5:1
Efficiency (%)	~57	~53	~46
Peak Gain (dBi)	~1.3	~2.0	~2.6
Average Gain (dB)	~-2.4	~-2.7	~-3.3
Impedance (Ohm)	50		
Polarisation	Linear		
Radiation Pattern	Omni-Directional		
Max. Input Power (W)	25		
Connector Type	SMA-Male Standard		
Cable Length	400 cm Standard		
Cable Type	LMR100 Standard (Other Cables Available)		

Cable 2	
Parameters	GPS Antenna
Standards	GPS/QZSS/Galileo
Band (MHz)	1575
Frequency (MHz)	1575.42
Return Loss (dB)	<=-14
VSWR	<=1.5:1
Impedance	50
Radiation Pattern	Hemispherical
Polarization	RHCP
Active Gain (dB)	26 @ 3 V
Noise Figure (dB)	1.2
Voltage (V)	2.7 – 5.5
Current (mA)	15 - 25
ESD Protection	2kV

Cable 2	
Parameters	GPS Antenna
Power Consumption (mW)	40 - 137
Connector Type	SMA-Male Standard
Cable Length	400 cm Standard
Cable Type	LMR100 Standard (Other Cables Available)

Antenna Measurement Conditions

Mounted on 30 x 30 cm Metal Plate

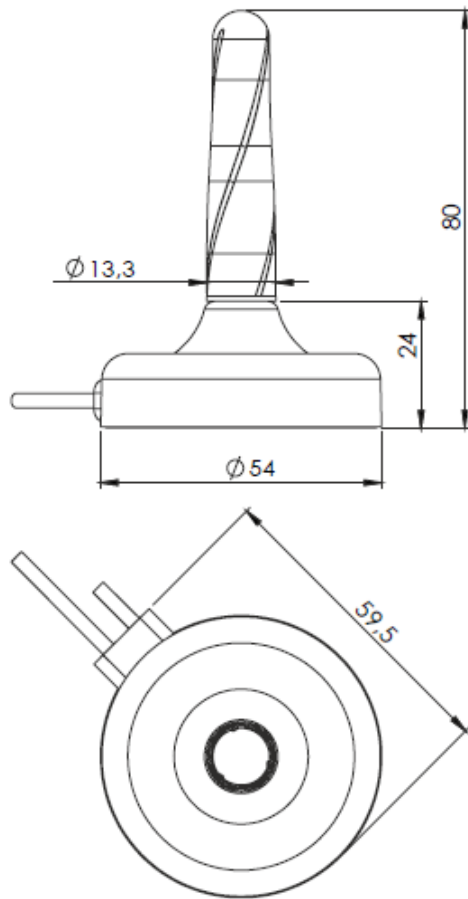
200 cm of Cable LMR100

Measured in Certified CTIA 3D Anechoic Chamber

Mechanical and environmental specifications

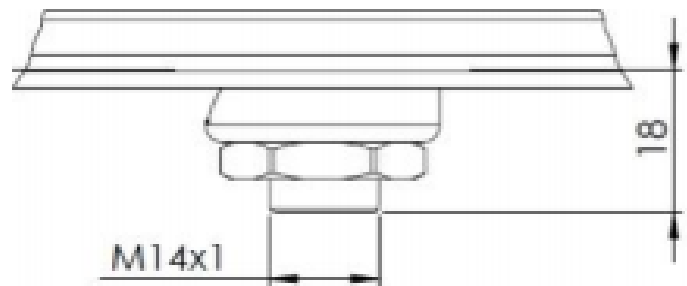
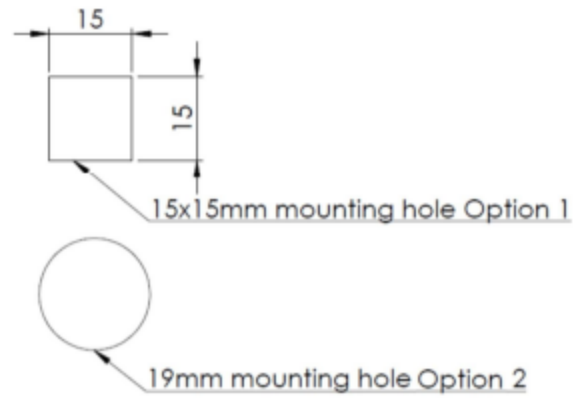
Specifications	2J7541M
Mounting Type	Body mount
Dimensions (mm)	Ø 54 × 80
Radome color	Black
Antenna Base	ABS, Zamak
Whip Material	TPE
Operating Temperature (C)	-40 to +85
Storage Temperature (C)	-40 to +85
Substance Compliance	RoHS
Certificates	IP67

Dimensions, terminals and mounting

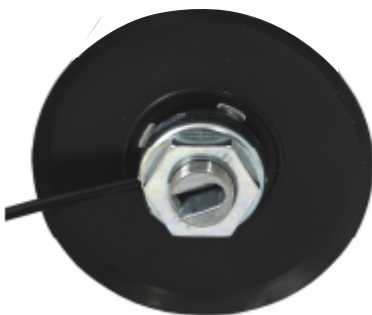


Basic shape of base

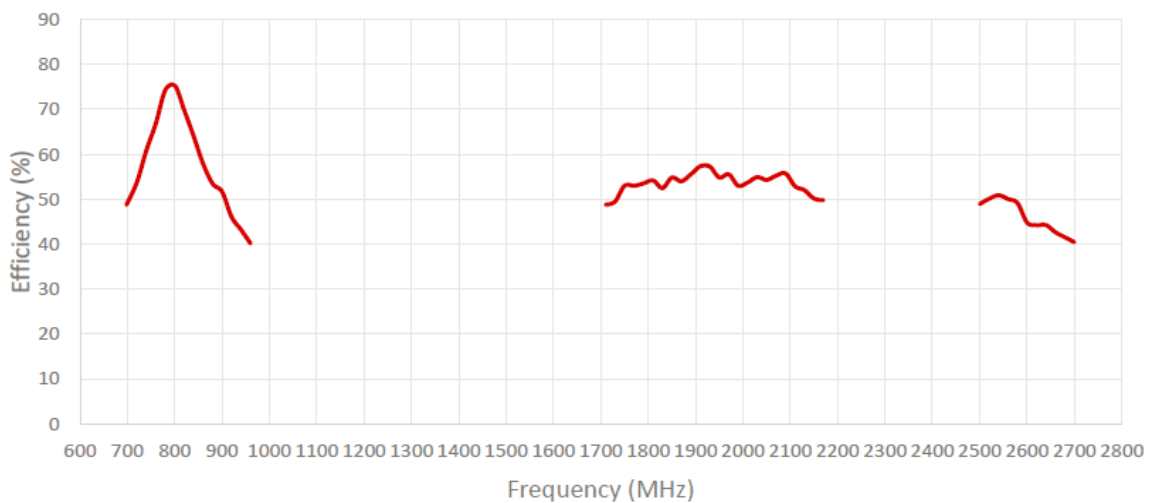
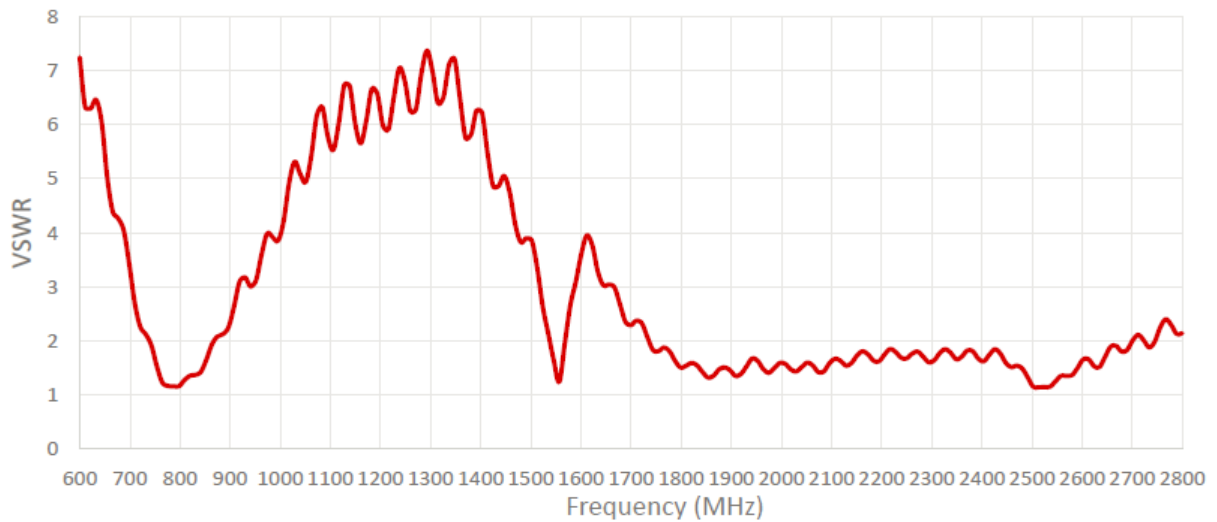
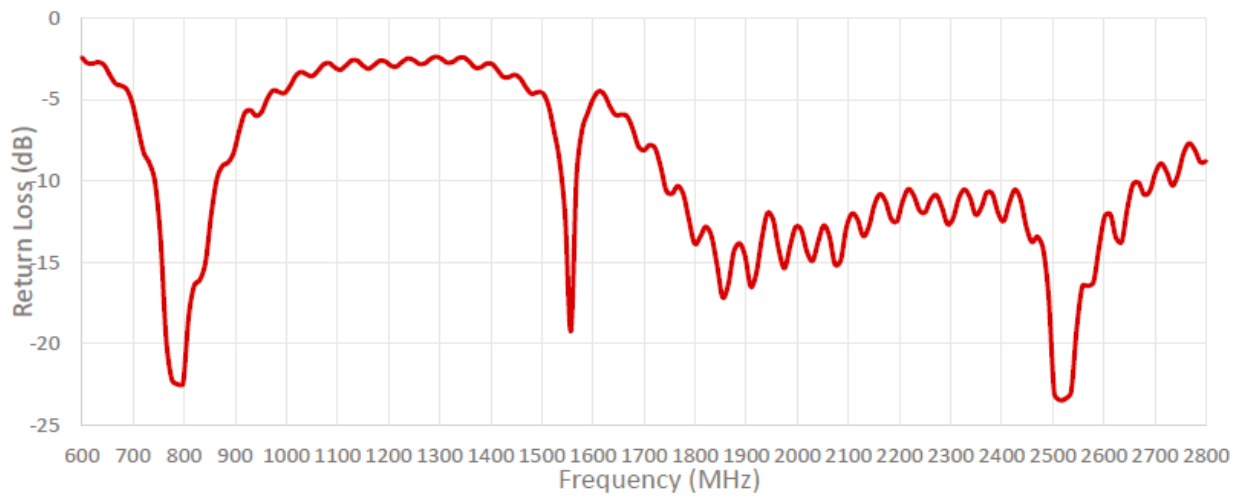
Mounting holes

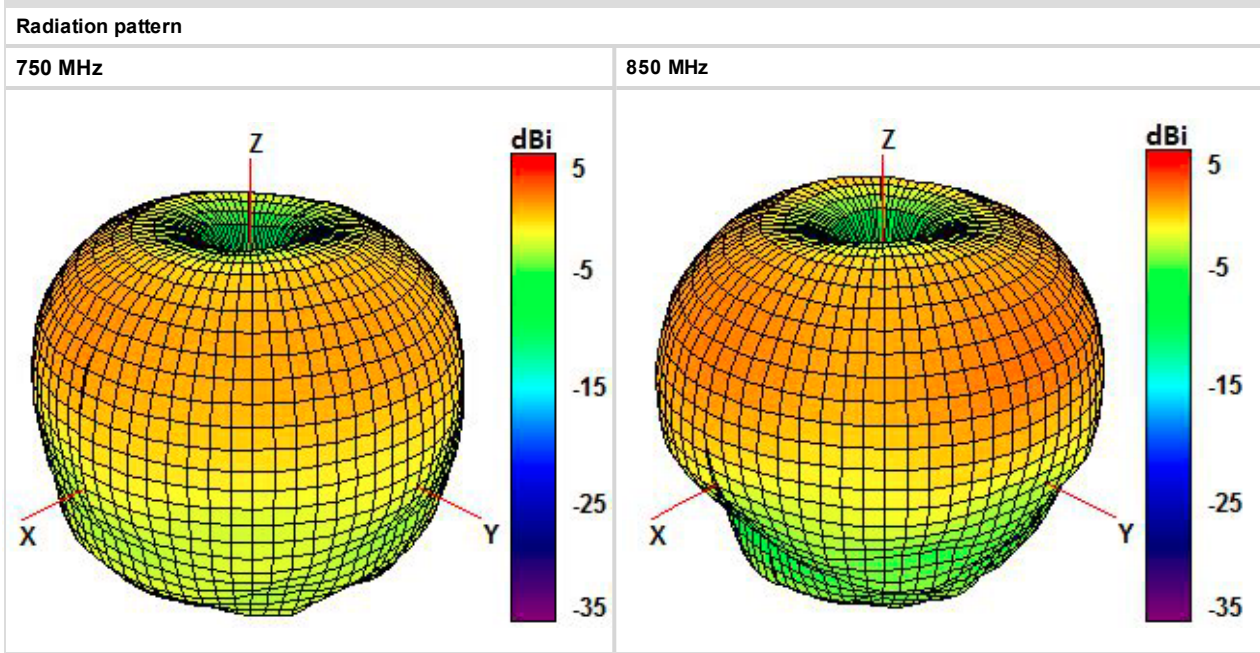
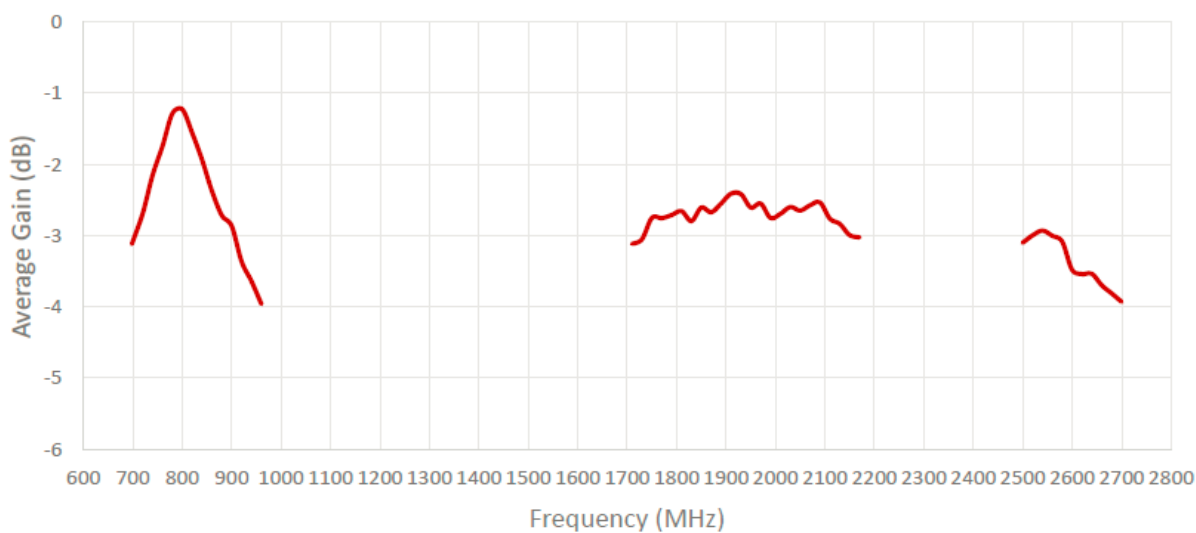
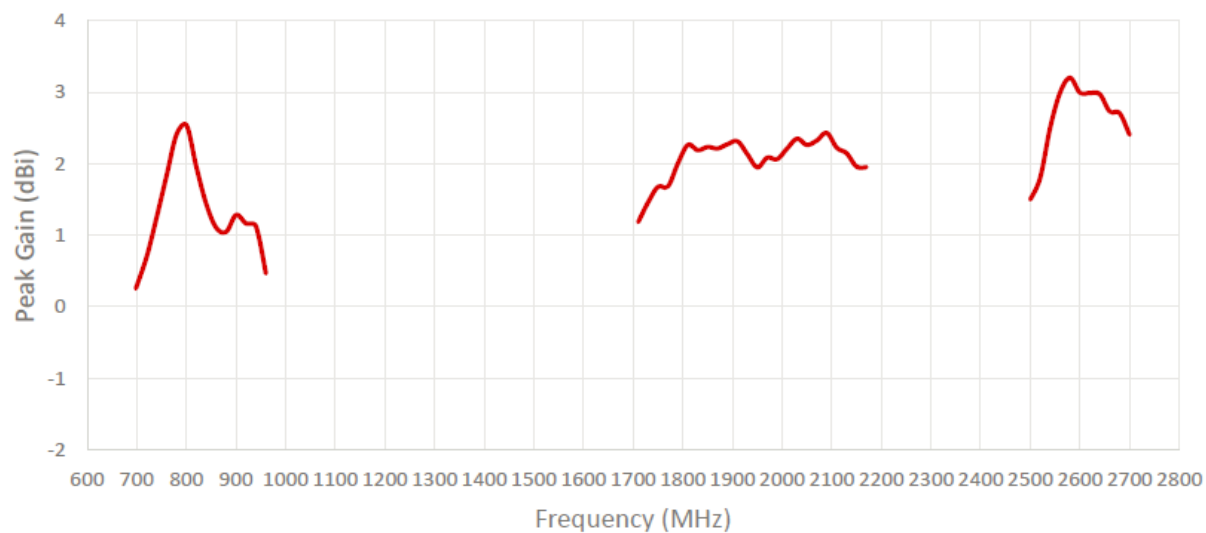


Screw M14x1



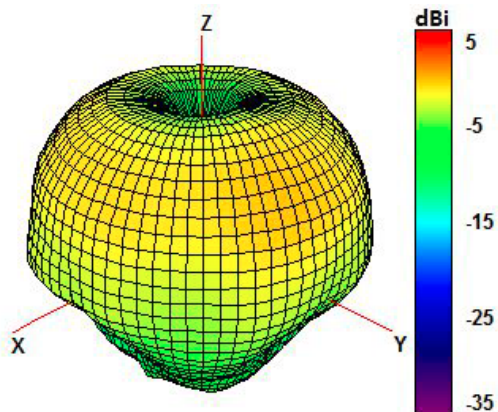
Related information



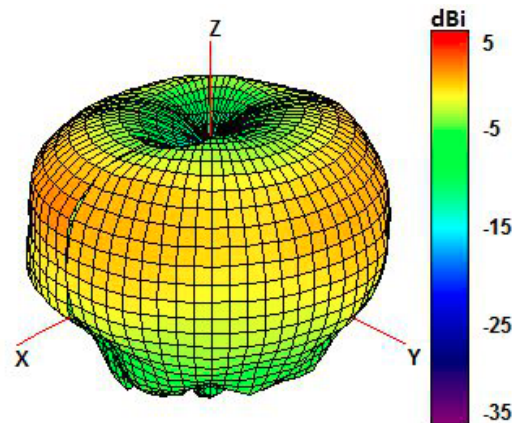


Radiation pattern

940 MHz

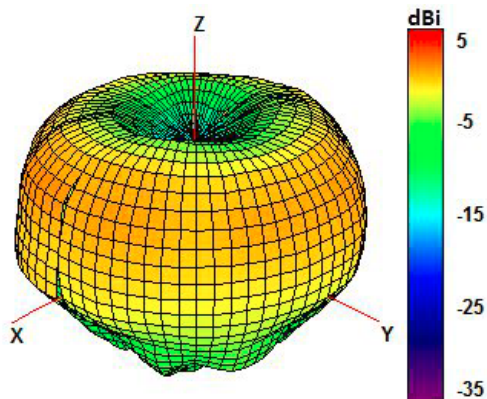


1750 MHz

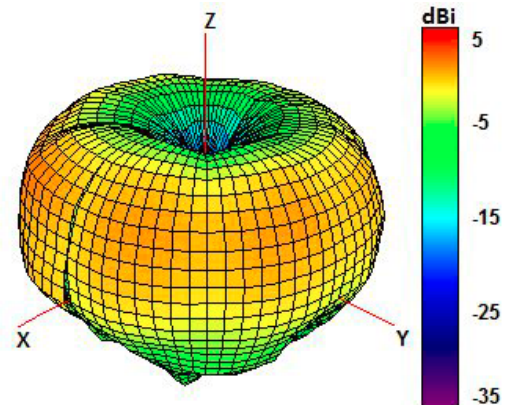


Radiation pattern

1850 MHz

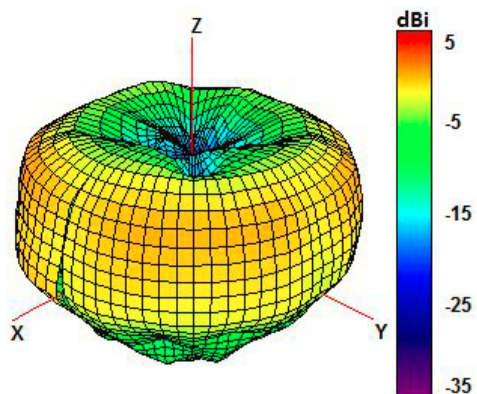


1950 MHz



Radiation pattern

2100 MHz



2600 MHz

